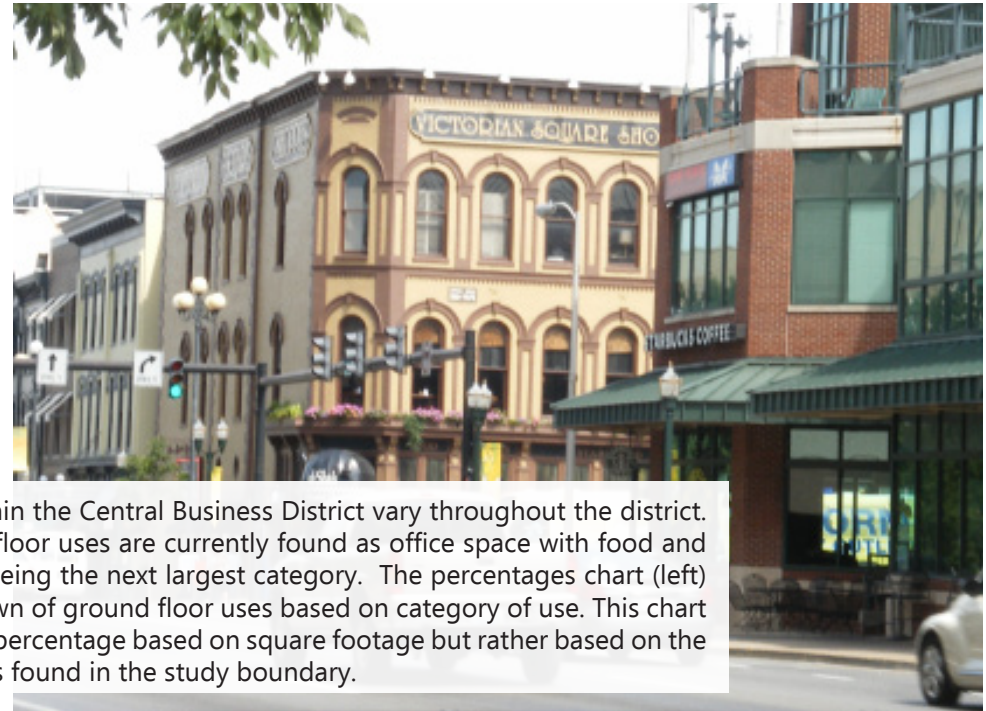
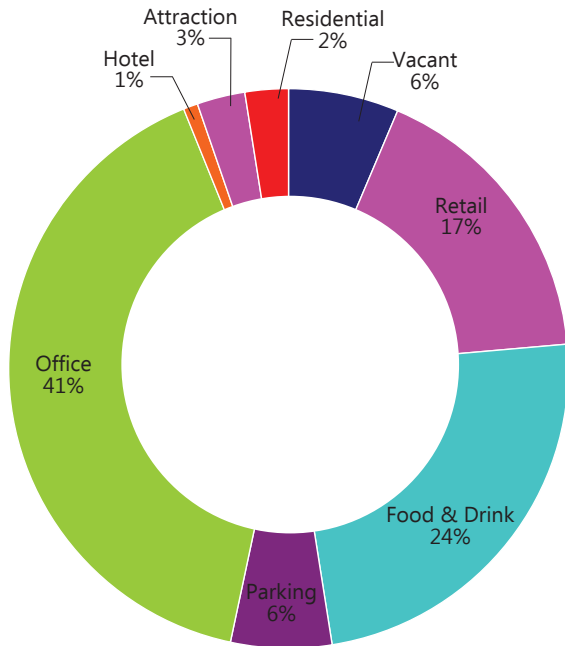
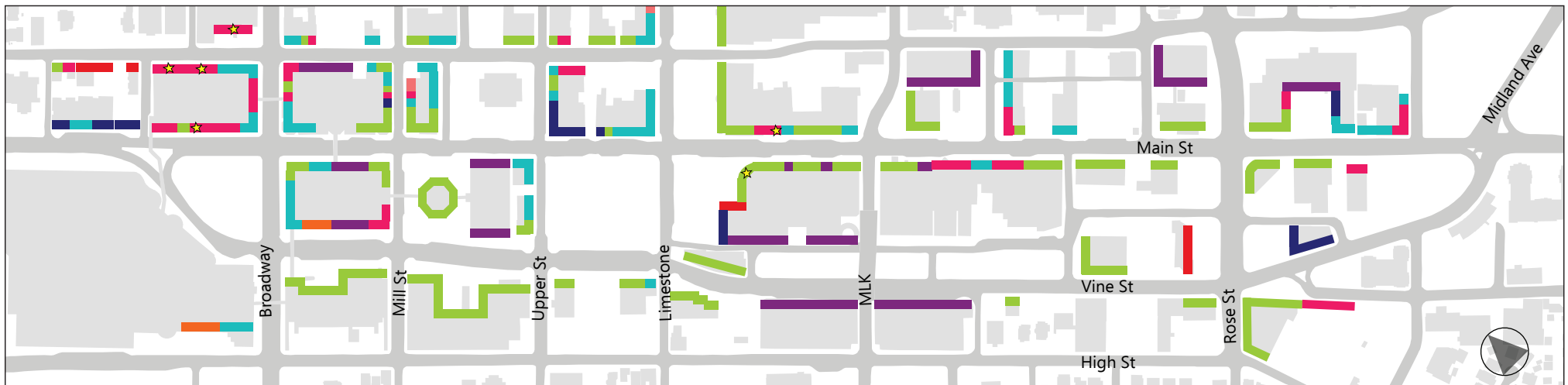


Ground Floor Use Analysis



Ground floor uses within the Central Business District vary throughout the district. A majority of the first floor uses are currently found as office space with food and drink establishments being the next largest category. The percentages chart (left) identifies the breakdown of ground floor uses based on category of use. This chart does not illustrate the percentage based on square footage but rather based on the total number of spaces found in the study boundary.



■ Office
 ■ Food & Drink
 ■ Vacant
 ■ Residential
 ■ Parking
 ■ Retail
 ■ Hotel
 ★ Attraction